

E \flat ALTO SAXOPHONE
E \flat BARITONE SAXOPHONE
E \flat ALTO CLARINET

MAJOR SCALES and CHORDS

G Major Scale (Concert B \flat)

Musical notation for the G Major Scale (Concert B \flat) in 4/4 time. The scale is written on a treble clef staff with a key signature of one sharp (F#). The notes are G, A, B, C, D, E, F#, G, A, B, C, D, E, F#, G. The piece concludes with a G major chord.

C Major Scale (Concert E \flat)

10

Musical notation for the C Major Scale (Concert E \flat) in 4/4 time. The scale is written on a treble clef staff with a key signature of no sharps or flats. The notes are C, D, E, F, G, A, B, C, D, E, F, G, A, B, C. The piece concludes with a C major chord.

D Major Scale (Concert F)

19

Musical notation for the D Major Scale (Concert F) in 4/4 time. The scale is written on a treble clef staff with a key signature of two sharps (F# and C#). The notes are D, E, F#, G, A, B, C#, D, E, F#, G, A, B, C#, D. The piece concludes with a D major chord.

F Major Scale (Concert A \flat)

28

Musical notation for the F Major Scale (Concert A \flat) in 4/4 time. The scale is written on a treble clef staff with a key signature of one flat (B \flat). The notes are F, G, A, B \flat , C, D, E, F, G, A, B \flat , C, D, E, F. The piece concludes with an F major chord.

A Major Scale (Concert C)

37

Musical notation for the A Major Scale (Concert C) in 4/4 time. The scale is written on a treble clef staff with a key signature of three sharps (F#, C#, G#). The notes are A, B, C, D, E, F#, G#, A, B, C, D, E, F#, G#, A. The piece concludes with an A major chord.

B \flat Major Scale (Concert D \flat)

46

Musical notation for the B \flat Major Scale (Concert D \flat) in 4/4 time. The scale is written on a treble clef staff with a key signature of two flats (B \flat and E \flat). The notes are B \flat , C, D, E \flat , F, G, A, B \flat , C, D, E \flat , F, G, A, B \flat . The piece concludes with a B \flat major chord.

E Major Scale (Concert G)

55

Musical notation for the E Major Scale (Concert G) in 4/4 time. The scale is written on a treble clef staff with a key signature of three sharps (F#, C#, G#). The notes are E, F#, G, A, B, C#, D#, E, F#, G, A, B, C#, D#, E. The piece concludes with an E major chord.

E \flat Major Scale (Concert G \flat)

64

Musical notation for the E \flat Major Scale (Concert G \flat) in 4/4 time. The scale is written on a treble clef staff with a key signature of three flats (B \flat , E \flat , and A \flat). The notes are E \flat , F, G, A \flat , B, C, D, E \flat , F, G, A \flat , B, C, D, E \flat . The piece concludes with an E \flat major chord.

2

B Major Scale (Concert D)

73

Musical notation for the B Major Scale (Concert D). The scale is written in treble clef with a key signature of two sharps (F# and C#) and a 4/4 time signature. The notes are B, C#, D, E, F#, G#, A, B, C#, D, E, F#, G#, A, B. The piece concludes with a double bar line and a final chord consisting of B, C#, and D.

A \flat Major Scale (Concert C \flat)

82

Musical notation for the A-flat Major Scale (Concert C-flat). The scale is written in treble clef with a key signature of three flats (B-flat, E-flat, and A-flat) and a 4/4 time signature. The notes are A-flat, B-flat, C, D, E-flat, F, G, A-flat, B-flat, C, D, E-flat, F, G, A-flat. The piece concludes with a double bar line and a final chord consisting of A-flat, B-flat, and C.

F# Major Scale (Concert A)

91

Musical notation for the F# Major Scale (Concert A). The scale is written in treble clef with a key signature of three sharps (F#, C#, and G#) and a 4/4 time signature. The notes are F#, G#, A, B, C#, D, E, F#, G#, A, B, C#, D, E, F#, G#. The piece concludes with a double bar line and a final chord consisting of F#, G#, and A.

D \flat Major Scale (Concert E)

100

Musical notation for the D-flat Major Scale (Concert E). The scale is written in treble clef with a key signature of two flats (B-flat and E-flat) and a 4/4 time signature. The notes are D-flat, E-flat, F, G, A, B-flat, C, D-flat, E-flat, F, G, A, B-flat, C, D-flat. The piece concludes with a double bar line and a final chord consisting of D-flat, E-flat, and F.

C# Major Scale (Concert E)

109

Musical notation for the C# Major Scale (Concert E). The scale is written in treble clef with a key signature of three sharps (F#, C#, and G#) and a 4/4 time signature. The notes are C#, D, E, F#, G, A, B, C#, D, E, F#, G, A, B, C#. The piece concludes with a double bar line and a final chord consisting of C#, D, and E.

G \flat Major Scale (Concert A)

118

Musical notation for the G-flat Major Scale (Concert A). The scale is written in treble clef with a key signature of two flats (B-flat and E-flat) and a 4/4 time signature. The notes are G-flat, A-flat, B, C, D, E-flat, F, G-flat, A-flat, B, C, D, E-flat, F, G-flat. The piece concludes with a double bar line and a final chord consisting of G-flat, A-flat, and B.

C \flat Major Scale (Concert D)

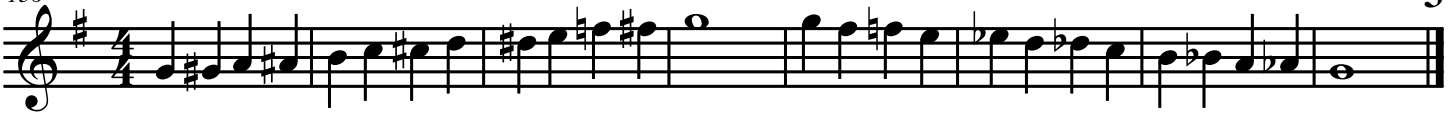
127

Musical notation for the C-flat Major Scale (Concert D). The scale is written in treble clef with a key signature of three flats (B-flat, E-flat, and A-flat) and a 4/4 time signature. The notes are C-flat, D-flat, E-flat, F, G, A-flat, B-flat, C-flat, D-flat, E-flat, F, G, A-flat, B-flat, C-flat. The piece concludes with a double bar line and a final chord consisting of C-flat, D-flat, and E-flat.

136

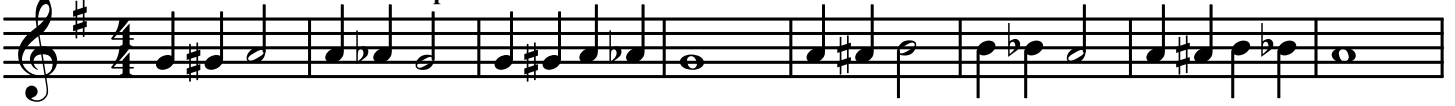
Chromatic Scale (all half steps)

3



144

Master two or three lines per week Chromatic Scale Challenges



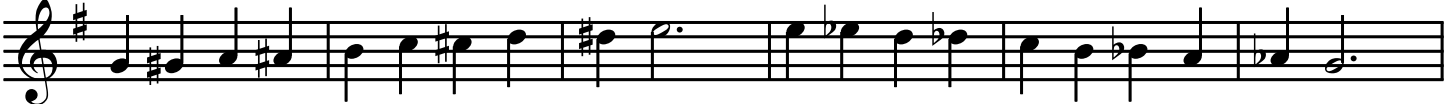
152



160



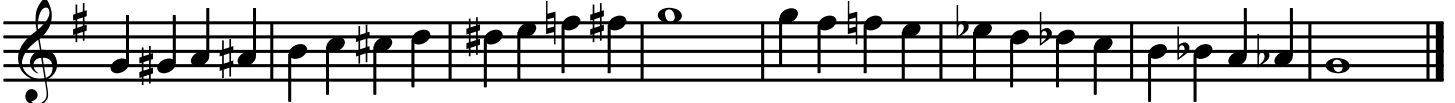
169



175



182



190

Largo Chromatic Scale Challenges and Low Range Builder



197



204



211

Woodwinds only



217



4 Chromatic Scale Challenges and High Range Builder

Largo

222

230

238

247

253

260

268

276

284

292

300

304

308

312